



# CUF-301BK / CUF-301SS

## OWNER'S MANUAL

**Freezer / Fridge**



**CUF-301BK**



**CUF-301SS**

## **Whynter 3.1 cu.ft. Energy Star Convertible Upright Freezer/Fridge with Lock**

**Congratulations on your new Whynter product!**

To ensure proper operation, please read this Instruction Manual carefully before using this product. Keep this manual in a safe place for future reference.

# Table of Contents

Table of Contents.....	2
Safety Precautions.....	2
Electrical Requirements.....	3
Parts and Features.....	4
Installation .....	5-6
Operation & Control .....	7
Cleaning & Maintenance .....	8-9
• Defrosting Your Freezer	
• Cleaning Your Freezer	
Energy Saving Tips .....	9
Troubleshooting .....	10
Warranty Information .....	11

## SAFETY PRECAUTIONS



**To Reduce The Risk Of Fire, Electrical Shock, Or Injury When Using Your Refrigerator, Follow These Basic Precautions.**

Read all of the instructions before using this appliance. When using this appliance, always exercise basic safety precautions, including the following:

- Read all instructions before using the appliance.
- Never clean appliance parts with flammable fluids. The fumes can create a fire hazard. Do not use an excessively wet cloth, industrial solvents, and oil-based products to clean this appliance.
- To clean the upright freezer, use only mild detergents. Never use harsh chemicals or solvents.
- Do not store or use gasoline or any other flammable vapors and liquids in the vicinity of this or any other appliance. The fumes can create a fire hazard.
- Do not abuse, sit on, or stand on the appliance.
- This appliance is not intended for use by persons (including children with reduced physical, sensory or mental capabilities, or lack of experience and knowledge, unless they have been given supervision or instruction concerning use of the appliance by a person responsible for their safety
- Children should be supervised to ensure that they do not play with the appliance.
- Ensure the upright freezer is unplugged before cleaning or if not in use
- If the power cord is damaged, it must be replaced by the manufacturer or its service agent or a similarly qualified person in order to avoid a hazard.
- Use the upright freezer only for its intended function. This appliance is designed for household, non-commercial use only. Any other use will void the warranty.
- Do not plug this upright freezer into the power source before setup is completed.
- An empty upright freezer can be dangerous for children and small animals. If disposing of the upright freezer, remove gaskets, latches, and the entire upright freezer door from your unused appliance so that children or small animals cannot be trapped inside.
- The upright freezer is an electrical appliance. To avoid serious injury from electrical shock, do not operate the upright freezer with wet hands, while standing on a wet surface, or while standing in water.
- To avoid the risk of shock, the product should never be used in bathrooms, shower rooms, or in any other steamy or wet areas.
- During installation, the power supply must not be excessively or dangerously bent or flattened.
- Do not tamper with controls.

## ELECTRICAL REQUIREMENTS

---

- Make sure the power plug is placed fully and firm into the power source. If the wall receptacle you intend to use is not adequately grounded or protected by a time delay fuse or circuit breaker, have a qualified electrician install an outlet that is appropriate to local electrical codes and requirements.
- Do not use multiple socket or an extension cord as it may overheat and become a risk of fire. Please ensure that the upright freezer is plugged directly into the electrical outlet.
- The cord should be secured behind the unit and should not be left exposed or dangling
- Make sure the power plug is clean before usage.
- Make sure hands are dry when connecting the power plug. The appliance is equipped with a three-prong grounded plug on the power cord for your protection. Never modify, remove or attempt to repair the power plug yourself.
- Never pull the power cord to disconnect the unit from an outlet. Grasp the plug directly and pull it from the outlet.
- Never lift or carry the upright freezer by the power cord.
- Keep the power cord away from heated surfaces.
- Do not repair, disassemble and/or modify the appliance by yourself.
- Always turn off the appliance when cleaning or transporting.
- Transport the appliance in an upright position only.
- Always place the appliance on even and hard and level surface.
- Close the freezer door immediately after putting in any items to maintain the internal temperature of the unit.
- Avoid placing the freezer near external heat sources or direct sunlight.
- Make sure the freezer is placed on a flat, level, and solid surface.
- Place your appliance on a hard and level floor that is strong enough to support it when it is fully loaded.
- Do not turn the freezer upside down, on its side 45° or more off level.
- Keep fingers out of the “pinch point” areas; clearance between the door and cabinet are necessarily small. Be careful closing the door when children are in the area
- Do not touch the cold surfaces in the freezer compartment when hands are damp or wet, skin may stick to these extremely cold surfaces
- Do not move this freezer without securing the door in a closed and latched position.
- Do not refreeze frozen foods which have thawed completely
- Performance may vary based on operational and ambient conditions.



### **Danger Electrical Shock Hazard**

#### **ELECTRICAL CONNECTION**

The power cord of this appliance is equipped with a 3-prong (grounding) plug which mates with a standard 3-prong (grounding) wall outlet to minimize the possibility of electric shock hazard from this appliance. Have the wall outlet and circuit checked by a qualified electrician to make sure the outlet is properly grounded. Where a standard 2-prong wall outlet is encountered, it is your personal responsibility and obligation to have it replaced with a properly grounded 3-prong wall outlet. Do not use an adapter. The freezer should always be plugged into its own individual electrical outlet which has a voltage rating that matches the rating plate.

A 115 Volt AC, 60 Hz, 15- or 20-amp fused, grounded electrical supply is required. This provides the best performance and also prevents overloading house wiring circuits which could cause a fire hazard from overheated wires. Never unplug your freezer by pulling on the power cord. Always grip plug firmly and pull straight out from the outlet. Repair or replace immediately all power cords that have become frayed or otherwise damaged. Do not use a cord that shows cracks or abrasion damage along its length or at either end. When moving the freezer away from the wall, be careful not to roll over or damage the power cord

#### **EXTENSION CORD**

Because of potential safety hazards, it is strongly recommended that you do not use an extension cord with this appliance. However, if you must use an extension cord, it is absolutely necessary that it be a UL/CUL-Listed, 3-wire grounding type appliance extension cord having a grounding type plug and outlet and that the electrical rating of the cord be 15 amperes and 115 volts. Failure to follow these instructions can result in fire, electric shock, or death.

**SAVE THESE INSTRUCTIONS**  
For continued safe use of your appliance.

## TECHNICAL DATA

**MODEL:****CUF-301BK/CUF-301SS**

STORAGE VOLUME

3.1 CU. FT.

REFRIGERATOR MODE

32 ~ 50°F (0 - 10°C)

FREEZER MODE

14 ~ -11°F (-10 ~ -24°C)

NET WEIGHT

52.8 LBS

GROSS WEIGHT

62.5 LBS

UNIT DIMENSIONS

20.7" W X 21.3" D X 34.4" H

REFRIGERANT

R600A

ESTIMATED YEARLY ELECTRICITY USE

240 KWH

NOISE LEVEL

≤42DB

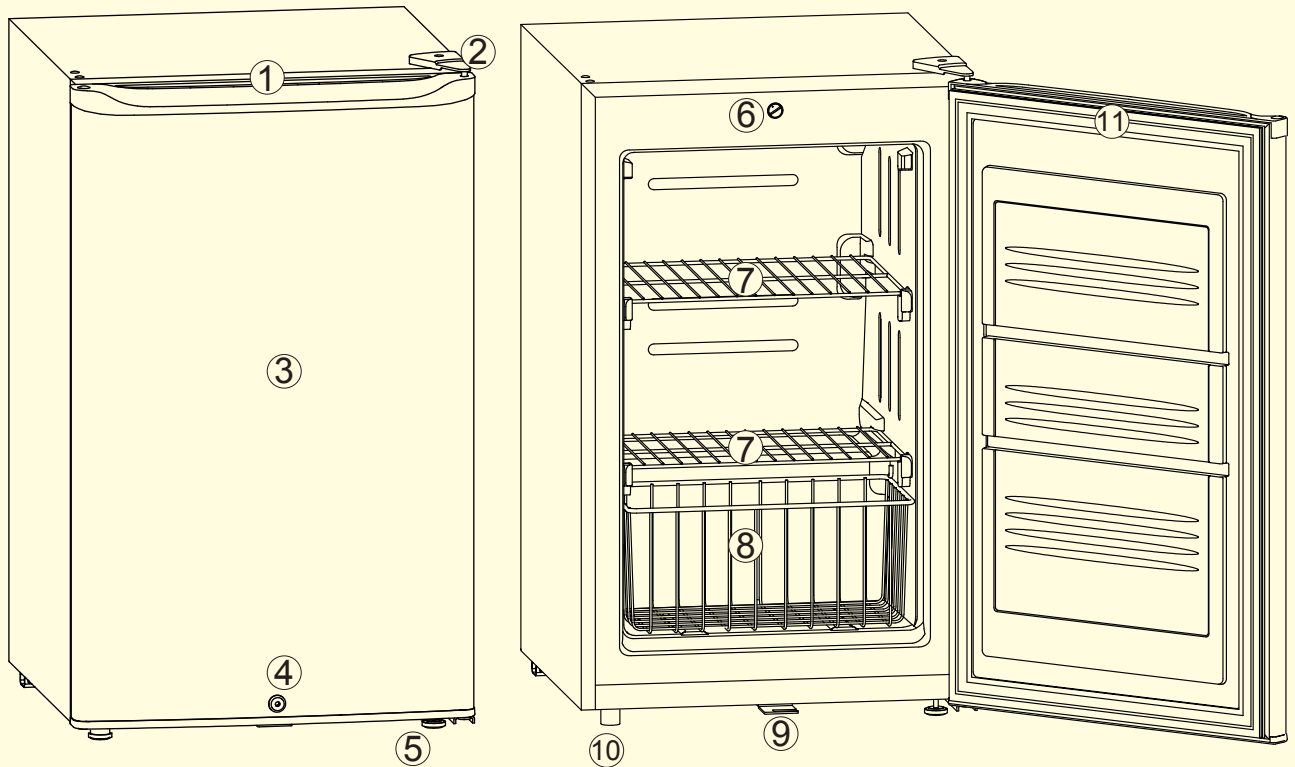
CERTIFICATION

ENERGY STAR RATED

UPC

852749006191 / 852749006993

## PARTS & ACCESSORIES



1. RECESSED DOOR HANDLE
2. DOOR HINGE COVER
3. DOOR
4. LOCK
5. LEVELING LEG
6. TEMPERATURE CONTROL KNOB

7. WIRE SHELVES
8. WIRE BASKET
9. LOCKING HOOK
10. HINGE FOOT
11. DOOR SEAL
12. KEY SET





### **WARNING: Excessive Weight Hazard**

Two or more people should move and install refrigerator.  
Failure to do so can result in back or other injury.

### **REMOVE PACKAGING MATERIALS**

**IMPORTANT:** Do not remove any permanent instruction labels or the data label on your upright freezer.

Remove tape and glue from the freezer before use.

- To remove any remaining residue, rub the area briskly with your thumb. You can also apply a small amount of liquid dish soap to the adhesive, rub gently with your fingers, then wipe with warm water and dry.
- Do not use sharp instruments, rubbing alcohol, flammable fluids, or abrasive cleaners, as these can damage the freezer's surface.

### **CLEANING BEFORE USE**

After removing all packaging materials, clean the interior of the freezer before use. See Usage Tips in the Cleaning and Maintenance section for guidance.

### **INSTALLATION CLEARANCES**

Your freezer should be conveniently located for everyday use in a dry, well-ventilated room. Do not install the freezer where the temperature will drop below 50°F or exceed 90°F, as it may not maintain proper cooling. Ensure the floor can support the freezer when fully loaded.

### **FREESTANDING INSTALLATION**

A free-standing installation allows you to place the upright freezer almost anywhere, provided the required clearance around the unit is maintained. Adequate ventilation and access for service are required in every setting. Never install or operate the freezer in an enclosed area, such as a closed cabinet.

- Before connecting the freezer to power, let it stand upright for approximately 4 hours to reduce the risk of cooling system malfunctions caused by transportation.
- Allow at least 4-6 inches of clearance at the rear and sides, and 1 inch at the top to ensure proper ventilation and service access. The installation should allow the freezer to be pulled forward for serving, if needed.
- When installing under a counter, follow the recommended spacing dimensions.
- Install the unit in a location protected from wind, rain, water spray, or drips. Do not use the freezer outdoors.
- Keep the freezer away from ovens, grills, or other sources of high heat
- Excess humidity will cause frost to form quickly on the evaporator, requiring more frequent defrosting.
- Follow all electrical requirements during installation.
- Place the freezer on a hard, level surface that can support its full weight. Level the unit as needed by adjusting the feet (see Leveling the Upright Freezer).
- A standard electrical supply (115 VAC, 60 Hz, 10 A), properly grounded according to the National Electrical Code and local regulations, is required.

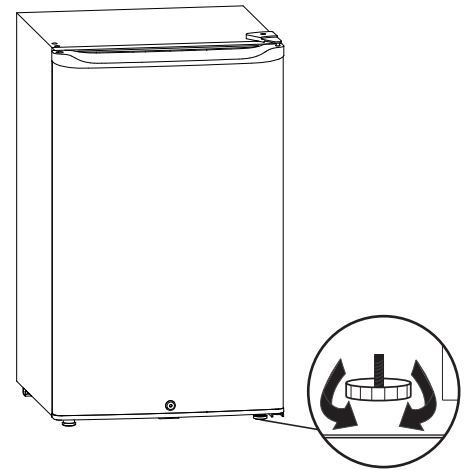
# INSTALLATION

## LEVELING THE UPRIGHT FREEZER

**IMPORTANT:** It is important for the upright freezer to be leveled in order to work properly. It can be raised or lowered by turning the two feet on the bottom of the machine. If the upright freezer is not leveled during installation, the doors may not close or seal properly; causing cooling, frost, or moisture problems. It is very important that the upright freezer is level in order to function properly. Note: The leveling foot under the door hinge is smaller than the other leveling foot.

We recommend using a carpenter's level to check the machine.

1. Place a carpenter's level on top of the product to see if the upright freezer is level from front to back and side to side.
2. Adjust the height of the right foot as follows:
  - Turn the leveling feet to level the upright freezer.

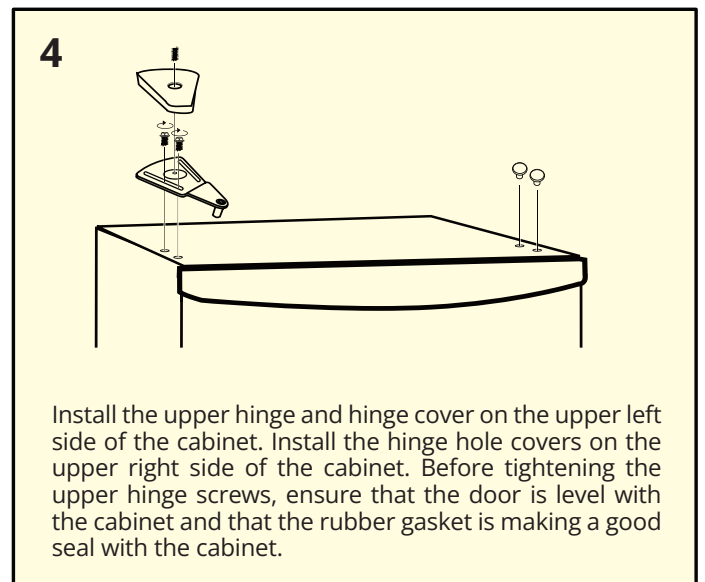
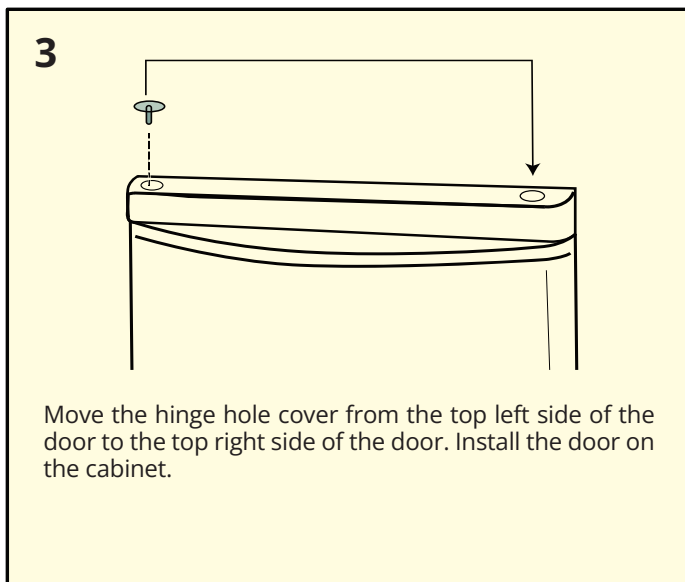
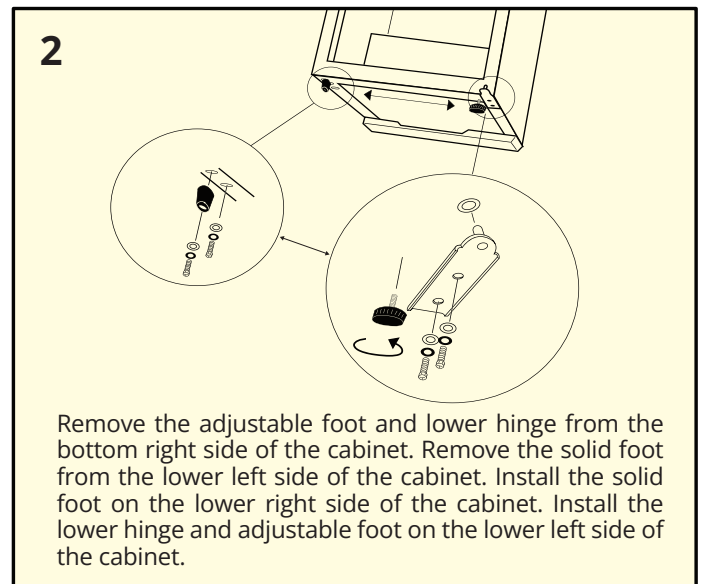
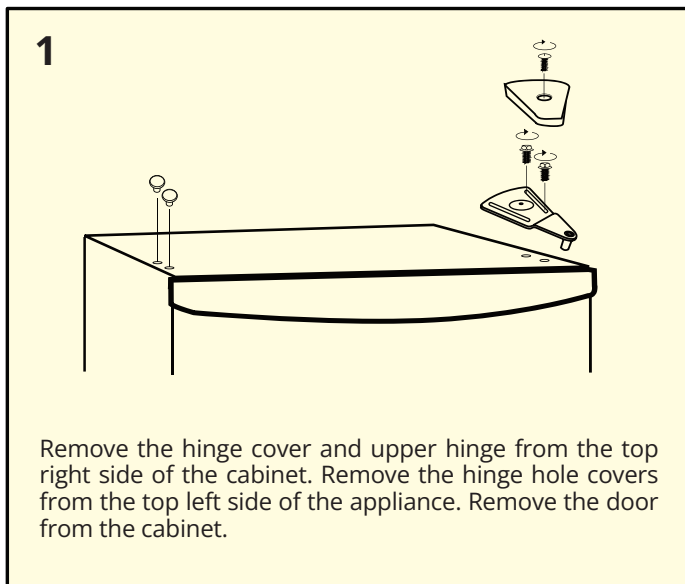


## Reversing the Door Swing

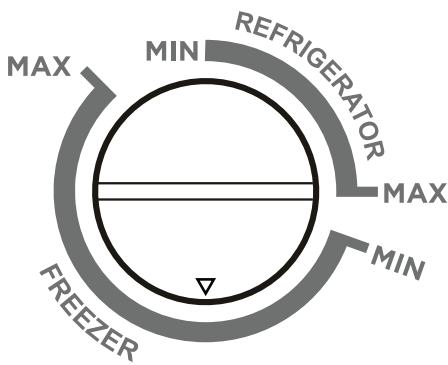
Tools needed: Flathead screwdriver, Phillips screwdriver Note: To avoid injury to yourself and property, we recommend someone assist you during the door reversal process

This appliance has the capability of the door opening from either the left or right side. Please ensure the appliance is unplugged and empty.

To take the door off, it is necessary to tilt the appliance backward. You should rest the appliance on something solid (e.g. chair) just below the top panel so you can access the bottom of the upright freezer. DO NOT lay the appliance completely flat as this may damage the coolant system.



### TEMPERATURE CONTROL



Note: Adjust the temperature by turning the thermostat dial using a flathead screwdriver.

#### REFRIGERATOR MODE

- Range: 32°F to 50°F (0°C to 10°C).
- Settings: MIN is warmest; MAX is coldest.
- Ambient Temp: Must be between 50°F and 110°F (10°C to 43°C).
- Tip: Keep food away from cabinet walls to prevent accidental freezing.

#### FREEZER MODE

- Range: 14°F to -11°F (-10°C to -24°C).
- Settings: MIN is warmest; MAX is coldest.
- Ambient Temp: Operates between 0°F and 110°F (-18°C to 43°C).
- Warning: Do not store sealed glass or liquid containers in freezer mode; they may crack or explode due to expansion.

### STORING FROZEN FOOD

For safe food storage, allow 4 hours for the freezer to cool down completely. The freezer will run continuously for the first several hours. Foods that are already frozen may be placed in the freezer after the first few hours of operation.

- Unfrozen food should NOT be placed in the freezer until it has operated for 4 hours. Allow several hours after each one-step adjustment for the freezer temperature to stabilize.
- When loading the freezer, freeze only 3 pounds of fresh food per cubic foot of space at a time. Distribute packages evenly throughout the freezer.
- Storage recommendation printed on the packaging of frozen food by the manufacturers should be always be followed.

### FREEZING FRESH FOOD

Ensure that your freezing operations are carried out under the most sanitary conditions as freezing alone does not sterilize the food.

- It is advisable to freeze the food by packing it into separate meal portions and not in bulk form. Never put hot or warm food into the upright freezer.
- Prior to storing the frozen food, pack it in plastic bags, aluminum sheets or freezing containers and place into the upright freezer.
- Fresh foods should not be stored together with frozen foods.
- When the temperature is set below 32°F, do not keep glass-bottled drinks such as beer or soda, as the glass may shatter and canned items may burst.
- Do not use this upright freezer as a refrigerator when the ambient temperature is 41°F as food can become frozen.

NOTE: For best performance, leave enough space inside the upright freezer cabinet for air to circulate around the packages.

### DEFROSTING

Under most ambient conditions, the appliance does not need to be defrosted. In cold ambient temperatures and/or high humidity, some frost may build up. To defrost the appliance, set the temperature control knob to "0", remove frozen or perishable items and defrosting should occur in a few hours. After defrosting, return the temperature control knob to the desired position. For faster defrosting, remove all items from the appliance, unplug the appliance and leave the door open. Never use a knife or other metal instrument to scrape ice/frost from the evaporator or wire shelves.

### NORMAL SOUNDS

- Your upright freezer may make sounds that are not familiar to you. Hard surfaces like the some flooring and walls can make the sounds seem louder than they actually are. The following describes the kinds of sounds that may be new to you a description of the cause of the sound.
- Rattling noises may come from the flow of the refrigerant or the water line, items stored on top of the up-right freezer can also make noises.
- The high efficiency compressor may make a pulsating or high-pitched sound.
- Noise emitted by the cooling fan on the condenser is a normal function.
- It is normal for the fan in the power supply to run all the time.
- As each cycle ends, you may hear a gurgling sound due to the refrigerant flowing in your upright freezer.
- The surface temperature of the compressor can reach 158 - 194°F when running.



### **WARNING:**

Before starting any cleaning or maintenance, make sure the unit is disconnected from the power supply. Do not touch the plug with wet hands, and never unplug the unit by pulling on the cord.

### **DEFROSTING YOUR FREEZER**

To prevent damage to the freezer walls, never use sharp or metal tools to scrape frost or pry off frozen food. Defrost the unit once frost reaches out 1/4 inch thick. This model requires manual defrosting.

Moisture from food and air will gradually form a layer of frost inside the freezer. The defrosting process must be done manually.

#### FOR COMPLETE DEFROSTING:

1. Turn the temperature control knob to "0" and unplug the freezer.
2. Remove all food and place it in insulated bags, a picnic cooler, or another cold container.
3. With the door open, place a pot of hot water inside to help loosen the frost. Remove large pieces of ice as they release.
4. Sponge excess water from the bottom of the freezer as it collects to prevent overflow.
5. Once the frost is gone, wipe the interior with a soft cloth to remove any remaining moisture. See *Cleaning Your Freezer* for more guidance.
6. After the compartment is dry, plug the freezer back in, reset the temperature control to its previous setting, and return the food.

Do not use mechanical devices or any alternative methods to speed up defrosting. Avoid pouring hot water into the cabinet or using a hair dryer, as this can warp the interior.



### **CAUTION:**

The upright freezer should be thoroughly cleaned if it has been left unused for an extended period.

### **CLEANING YOUR FREEZER**

#### EXTERIOR:

- Keep the finish clean. Wipe with a soft cloth lightly dampened with appliance polish wax or mild liquid dish soap.
- Dry and polish with a clean cloth. Do not use a soiled dishcloth or a wet towel.
- Avoid scoring pads, powdered cleaners, bleach, or any cleaner that contains bleach.

#### INTERIOR:

- Clean the inside of your freezer at least once a year. It is best to unplug the freezer before cleaning. If unplugging is not practical, wring excess moisture from your cloth or sponge when cleaning near switches, lights, or controls.
- Use warm water mixed with baking soda, about one tablespoon of baking soda per quart of water. Rinse well and wipe dry. Do not use abrasive cleaners or cleaning powders. Do not wash removable parts in a dishwasher.
- To control odors, place an open box of baking soda inside the freezer and replace it every three months.

#### NOTE:

Be careful when moving the freezer away from the wall. Floor coverings, especially cushioned or embossed surfaces, can be damaged. Damp objects can stick to cold metal surfaces, so do not touch interior metal parts with wet or damp hands. The freezer must be unplugged to avoid electrical hazards when defrosting.

## CLEANING & MAINTENANCE

---

### PROLONGED OFF PERIODS

If the upright freezer will not be used for an extended time, disconnect it from the power supply. Clean and dry the interior as instructed, then leave the door open to prevent mold and mildew.

Moisture from food and air will gradually form a layer of frost inside the freezer. The defrosting process must be done manually.

### USAGE TIPS:

- Keep the freezer door closed as much as possible. Avoid frequent opening, especially in hot and humid weather.
- Ensure there is sufficient clearance around the unit for proper ventilation, particularly at the back.
- For typical household use, set the thermostat to the middle setting.
- Only place items in the freezer once they have cooled to room temperature.
- Ice and frost buildup increase energy consumption. Defrost the freezer when frost reaches about 1/4 inch thick.

### PREPARING FOR VACATION:

- If you want the freezer to continue operating during a vacation, ensure your home's power remains on.
- For extended absences, consider moving frozen foods to a storage locker temporarily.
- If the freezer will be left empty, unplug it from the wall. To prevent odors, place an open box of baking soda inside and leave the door open.

### IN CASE OF EXTENDED POWER FAILURE:

- Keep the freezer door closed. The freezer can keep frozen for up to 24 hours if warm air is not admitted.
- If the power will be out for 24 hours or more, add dry ice in large pieces, replenishing as needed.

### NOTE:

Handling dry ice can freeze your hands; wear gloves or other protection. If dry ice is unavailable, move frozen food to a storage locker until power is restored.

## ENERGY SAVING TIPS

---

Follow the best practice to achieve optimal energy saving result:

- Place the freezer in the coolest part of the room, away from heat sources, heating ducts, and direct sunlight.
- Let hot foods cool to room temperature before placing them in the freezer.
- Avoid overloading the freezer, as this forces the compressor to work harder. Slow freezing can reduce food quality or cause spoilage.
- Wrap foods properly and wipe containers dry before freezing to minimize frost buildup.
- Do not line freezer shelves with aluminum foil, wax paper, or paper towels, as this blocks cold air circulation and reduces efficiency.
- Organize and label food to minimize door openings. Remove all needed items at once and close the door promptly.



### Troubleshooting

Many common refrigerator problems are easily resolved. Try the troubleshooting suggestions below

Problem	Possible Causes	Solutions
The machine won't operate	<ul style="list-style-type: none"> <li>The upright freezer is unplugged</li> <li>The voltage is not in the correct range</li> <li>Too many appliances running from the same power circuit</li> </ul>	<ul style="list-style-type: none"> <li>Push the plug completely into the power source</li> <li>Make sure that the upright freezer runs on a dedicated power source that can support the maximum power consumption of the upright freezer</li> <li>Run the upright freezer on a dedicated power source</li> </ul>
Noise during operation	<ul style="list-style-type: none"> <li>The legs are not leveled</li> <li>Certain sounds are normal</li> </ul>	<ul style="list-style-type: none"> <li>Make sure legs are properly installed</li> <li>See "Normal Sounds"</li> </ul>
The compressor runs for 1 to 5 minutes and stops	<ul style="list-style-type: none"> <li>The voltage is not in the correct range</li> </ul>	<ul style="list-style-type: none"> <li>Unplug and restart when the power is normal</li> </ul>
The compressor runs but the inner liner does not get very cold	<ul style="list-style-type: none"> <li>The ambient temperature is too high</li> <li>The system is blocked</li> </ul>	<ul style="list-style-type: none"> <li>If temperature is higher than 90°F, the unit need longer to cool to the set temperature</li> <li>Contact Whynter Service Department via email at <a href="mailto:service@whynter.com">service@whynter.com</a></li> </ul>
The upright freezer does not cool sufficiently	<ul style="list-style-type: none"> <li>Freezer door being opened frequently</li> <li>Freezer door left open for a while</li> <li>Not enough adequate clearance</li> <li>Freezer is overfilled</li> <li>Ambient temperature is too high</li> </ul>	<ul style="list-style-type: none"> <li>Refrain from opening the upright freezer door recurrently</li> <li>Make sure to close upright freezer door</li> <li>Follow recommended clearance measurements</li> <li>If temperature is higher than 90°F, the unit need longer to cool to the set temperature</li> </ul>
The compressor does not run	<ul style="list-style-type: none"> <li>The controller is faulty (the power indicator is not on)</li> <li>The temperature is set too high and the ambient temperature is too low</li> </ul>	<ul style="list-style-type: none"> <li>Contact Whynter Service Department</li> <li>Set the upright freezer to a lower temperature</li> </ul>
Door does not fully close	<ul style="list-style-type: none"> <li>Legs are not properly leveled</li> <li>Stored items holding door open</li> </ul>	<ul style="list-style-type: none"> <li>See "Leveling the Upright Freezer"</li> <li>Move stored item to a different location</li> </ul>
Food is defrosting	<ul style="list-style-type: none"> <li>Freezer is unplugged</li> <li>Fuse blown</li> <li>Freezer door being opened frequently</li> <li>Freezer door left open for a while</li> </ul>	<ul style="list-style-type: none"> <li>Push the plug completely into the power source</li> <li>Replace fuse or reset the breaker</li> <li>Check to see if an object is holding the door open</li> </ul>
Excessive frost buildup	<ul style="list-style-type: none"> <li>Door left open too frequent or too long door openings</li> <li>High humidity</li> </ul>	<ul style="list-style-type: none"> <li>Check to see if an object is holding the door open</li> <li>Open the door less often</li> </ul>
Freezer external surface is warm	<ul style="list-style-type: none"> <li>The external freezer walls may reach up to 30° F warmer than room temperature during normal operation. Insufficient clearance around the unit may cause the exterior walls to feel warmer than expected.</li> </ul>	<ul style="list-style-type: none"> <li>This is normal under certain conditions. Check the door seal and ensure proper installation. Reduce the frequency and duration of door openings</li> </ul>
Moisture forms on inside upright freezer walls	<ul style="list-style-type: none"> <li>Weather is hot and humid, which increases internal rate of frost buildup</li> <li>Door may not be seating properly</li> <li>Door is kept open too long, or is opened too frequently</li> </ul>	<ul style="list-style-type: none"> <li>This is normal</li> <li>Check door installation</li> <li>Open the door less often</li> </ul>
Odors in upright freezer	<ul style="list-style-type: none"> <li>Interior needs to be cleaned</li> <li>Food with strong odors are in the upright freezer</li> </ul>	<ul style="list-style-type: none"> <li>Clean interior with sponge, warm water, and baking soda</li> </ul>



### Live Support

Still having issues? Get real-time help through our live chat.





## ONE YEAR LIMITED WARRANTY

Warranty begins from the original date of purchase

This WHYNTER product is warranted, to the original owner within the 48 continental states, for one year from the date of purchase against defects in material and workmanship under normal use and service. When making a warranty claim, please have the original bill or invoice of purchase with purchase date available. Should your WHYNTER product prove defective within one year from the date of purchase, return the defective part or unit, freight prepaid (within two months of purchase; after two months to one year, customer will be responsible for freight cost to Whynter's service department), along with an explanation of the claim to Whynter LLC. A return authorization number issued by Whynter is required for all warranty claims and returns. Please package the WHYNTER product carefully in its original packaging material to avoid damage in transit. The original box and packaging material should be retained, as Whynter is not responsible for the cost of replacement packaging. Under this warranty, Whynter will repair or replace any parts found defective at our discretion. This warranty is not transferable. After the expiration of the warranty, the cost of labor and parts will be the responsibility of the original owner of the unit.

### THIS WARRANTY DOES NOT COVER:

- Acts of God, such as fire, flood, hurricanes, earthquakes and tornadoes.
- Improper power supply such as power surge, low voltage, defective household wiring or inadequate fuses.
- Use in commercial or industrial applications.
- Damage, accidental or otherwise, to the product while in the possession of a consumer not caused by a defect in material or workmanship.
- Damage caused by consumer misuse, tampering, lack of maintenance or failure to follow the care and special handling provisions in the instructions.
- Damage to the finish of the case, or other appearance parts caused by wear.
- Damage caused by repairs or alterations to the product by anyone other than authorized by the manufacturer.
- Removal, Replacement Packaging, Freight and Insurance cost for the warranty service.
- Products sold AS IS or from an unauthorized reseller.
- Products that have had their serial numbers removed or defaced.

### DISCLAIMER OF IMPLIED WARRANTIES; LIMITATION OF REMEDIES

*CUSTOMER'S SOLE AND EXCLUSIVE REMEDY UNDER THIS LIMITED WARRANTY SHALL BE PRODUCT REPAIR OR REPLACEMENT AS PROVIDED HEREIN. CLAIMS BASED ON IMPLIED WARRANTIES, INCLUDING WARRANTIES OF MERCHANTABILITY OR FITNESS FOR A PARTICULAR PURPOSE, ARE LIMITED TO ONE YEAR OR THE SHORTEST PERIOD ALLOWED BY LAW, BUT NOT LESS THAN ONE YEAR. WHYNTER SHALL NOT BE LIABLE FOR CONSEQUENTIAL OR INCIDENTAL DAMAGES SUCH AS PROPERTY DAMAGE AND INCIDENTAL EXPENSES RESULTING FROM ANY BREACH OF THIS WRITTEN LIMITED WARRANTY OR ANY IMPLIED WARRANTY. SOME STATES AND PROVINCES DO NOT ALLOW THE EXCLUSION OR LIMITATION OF INCIDENTAL OR CONSEQUENTIAL DAMAGES, OR LIMITATIONS ON THE DURATION OF IMPLIED WARRANTIES, SO THESE LIMITATIONS OR EXCLUSIONS MAY NOT APPLY TO YOU. THIS WRITTEN WARRANTY GIVES YOU SPECIFIC LEGAL RIGHTS. YOU MAY ALSO HAVE OTHER RIGHTS THAT VARY FROM STATE TO STATE. PRODUCT CONTENTS AND SPECIFICATIONS MAY CHANGE WITHOUT NOTICE.*



**Need Help Fast?  
Chat with Us!**  
Get instant answers 24/7



**Proof of Purchase**  
Please Retain Original  
Proof of Purchase



**Need Help Fast?**  
**Chat with Us!**  
Get instant answers 24/7



**JOIN THE  
CONVERSATION**



**E: [support@whynter.com](mailto:support@whynter.com) | T: 866-WHYNTER | [www.whynter.com](http://www.whynter.com) | ©2026 Whynter LLC**

Disclaimer: All information and technical data provided in this manual are approximate values and estimations. Whynter reserves the right to modify product specifications or documentation without prior notice to improve performance and safety.